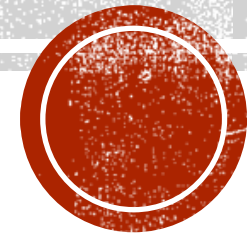


**THE MYSTERIOUS MAYA**  
**YEAR 5**  
**AUTUMN 1 TERM 2021**



# SPARKLING STARTER

WHO ARE THE MAYANS? HOW DID THEY LIVE? AND HOW DOES A BOY CALLED  
MAX FIT INTO THEIR HISTORICAL TALE?  
WE WILL BE INVESTIGATING USING ART, STOP MOTION AND RESEARCH!



## Fabulous Finish

Through Design and Technology, the children will create their own traditional Mayan whistle.



# ENGLISH

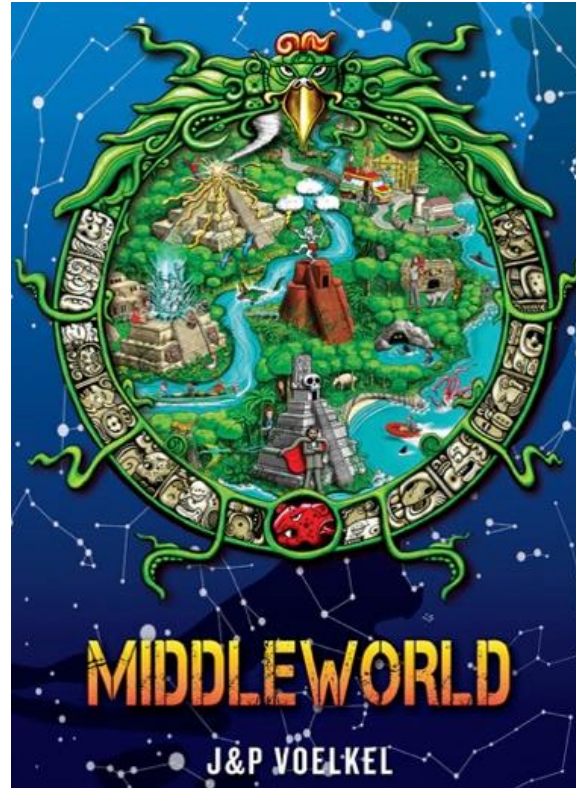
## Class Text

This term, we will be following Max Murphy in his quest to save his parents in the ancient city of the Maya. Working with Mayan girl Lola, we will embark on an adventure together to uncover ancient secrets of the Maya!

## How can you help?

Talk to your child about what they are reading. What do they like or dislike about it? What are the themes of the story? Which character do they like best and why?

Encourage them to read lots of non-fiction text about living things and their habitats. Also reading a variety of non-chronological texts.



## We will be writing:

- Non-chronological reports on the ancient Maya
- Stories from other cultures
- Performing poetry in front of an audience

## Assessment

The children will be sitting assessments in December with our new assessment program Pixl. From this, we will be able to determine further intervention needs for the children within the class.



# MATHS

## Overview

- Decimal fractions
- Money
- Negative numbers

## How can you help?

As we move into year 5, the children should know all times tables up to 12. Please continue to encourage your child to learn their times tables and associated division facts. e.g  
 $7 \times 6 = 42$  ,  $6 \times 7 = 42$ ,  $42 \div 7 = 6$  and  $42 \div 6 = 7$

Why not visit these websites at home:

[www.myminimaths.co.uk](http://www.myminimaths.co.uk)

<https://ttrockstars.com/>

<https://www.topmarks.co.uk/maths-games/hit-the-button>

## How do we plan?

We use NCETM to assist with our planning alongside other sites like White Rose, TES and Twinkl.



## Assessment

The children will be sitting assessments in December with our new assessment program Pixl. From this, we will be able to determine further intervention needs for the children within the class.



# SCIENCE

In Science, we will be looking at living things and their habitats. We will be delving into their lifecycles and how different mammals, reptiles and amphibians reproduce, and comparing this with the reproduction of plants.

We will be outside as much as we can, making observations of the local area.



We will use our scientific enquiry skills to:

- make observations
- make predictions and form conclusions

**How can you help?**

[www.bbc.com/bitesize/topics](http://www.bbc.com/bitesize/topics)

# Computing

In Computing, we will be investigating different elements of coding, making sure we are aware of being safe while being online and beginning to explore spreadsheets and their use of data.

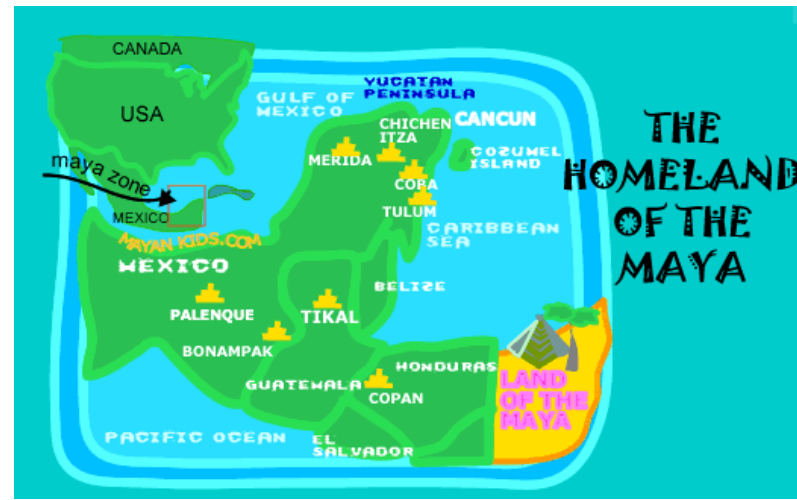
We use Purple Mash for our scheme of work. Your child is able to access this from home.



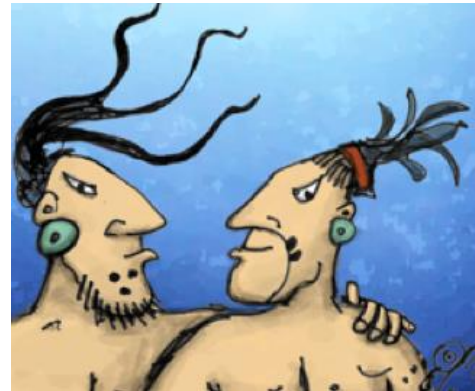
# GEOGRAPHY

In Geography, we will be studying the differences between England and South America.

We will be looking at differences in cultures, land, weather and improving our map skills.



## D&T



In D&T, we will be researching information on Mayan whistles, why they exist and what they were used for.

We will design and then create our own Mayan whistle out of clay, adding detail and colour.

## History

This term, we will be looking at the rich history of the ancient Mayans. We will familiarise ourselves with the timeline of the Maya, look at ancient art, fashion, gods and ball games. We will even be attempting to write in Maya Glyphs!



# PE

This term in PE, we will be looking at invasion games. We will be starting with netball, and then moving on to football and rugby.



# French

In French, we will be learning how to proceed with another language while on holiday. After this topic, we will be learning how to order and eat out in French.

# Mindfulness

We will also have daily mindfulness in class. This is where we take 10 minutes each day and discuss calming techniques.

# PSHE

In PSHE, we will be looking at new beginnings and how we form relationships. We will discuss how to keep our relationships with different people in our lives healthy and how to maintain a positive mental health.



# GENERAL INFORMATION

## Diary Dates

<u>Autumn Term</u>	
Black History Month	October
Inset Day	01.11.2021
Outdoor Learning Day	04.11.2021
Parents Evening	w.c. 08.11.2021 and 15.11.2021
Armistice Day	11.11.2021
Children in Need	12.11.2021
St Andrew's Day	30.11.2021
Christmas Dinner and Jumper Day	10.12.2021

### **PE Days**

On a Tuesday and a Thursday.

These days can change, so please can all children keep a change of clothes for PE in the classroom for the duration of the term.

## Homework

In Year 5, homework is set weekly. This is on a Friday. It is due in the following Wednesday. Homework can be found on Seesaw.

Homework will consist of:

\*spellings

\*reading comprehension or a Maths activity

Please ask your child to seek help from a member of staff if they are having difficulty with their homework.

