



Bug's Life
Year 4
Autumn 1 Term 2021

Sparkling Starter

Invertebrate Hunt Around the School



Fabulous Finish

Through Design and Technology, the children will create their bug hotel.

English

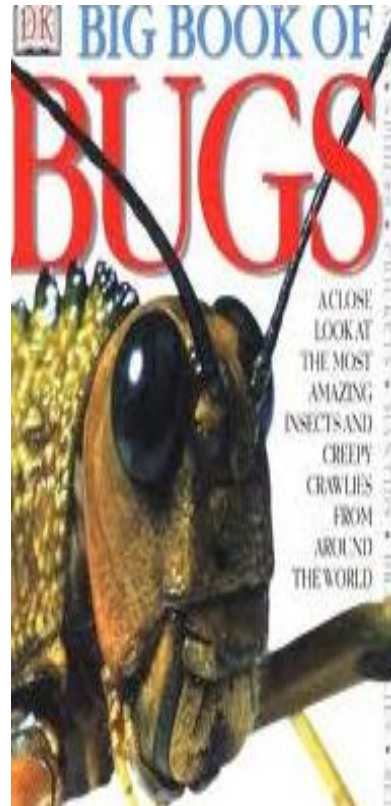
Inspiration

For our stimulus this term in English we will be reading a variety of non-fiction texts about bugs and watching the film *A Bug's Life*.

How can you help?

Talk to your child about what they are reading. What do they like or dislike about it? What are the themes of the story? Which character do you like best and why?

Encourage them to read lots of non-fiction text about living things and their habitats. Also reading a variety of non-chronological texts.



We will be writing:

- Non-chronological reports and explanation texts on living things and bugs.
- Character and scene descriptions.
- Persuasive letters.
- Free verse poetry based on animals.
- Performing poetry in front of an audience.

Assessment

The children will sit a half termly test in reading and Grammar, Punctuation and Spelling. This will inform future planning and teaching.

Maths

Overview

- Number: Place Value within 10,000
- Number: Addition, subtraction
- Perimeter
- 3,6,9 times tables

How can you help?

Please continue to encourage your child to learn their times tables and associated division facts. E.g
 $7 \times 6 = 42$, $6 \times 7 = 42$, $42 \div 7 = 6$ and $42 \div 6 = 7$

Why not visit these websites at home.

www.myminimaths.co.uk

<https://ttrockstars.com/>

<https://www.topmarks.co.uk/maths-games/hit-the-button>

How do we plan?

We use NECTM Maths Scheme of Learning alongside other material.



Assessment

The children will sit a half termly test in arithmetic and reasoning. This will inform future planning and teaching.

Science

In Science, we will be learning about the characteristics of a living thing. We will be going on an invertebrate hunt around the school grounds and completing activities on classification and habitats. We shall be looking at teeth and comparing human teeth with animal teeth. Lastly, we will be studying the human digestive system.

We will use our scientific enquiry skills to:

- make observations
- make predictions and form conclusions

How can you help?

www.bbc.com/bitesize/topics

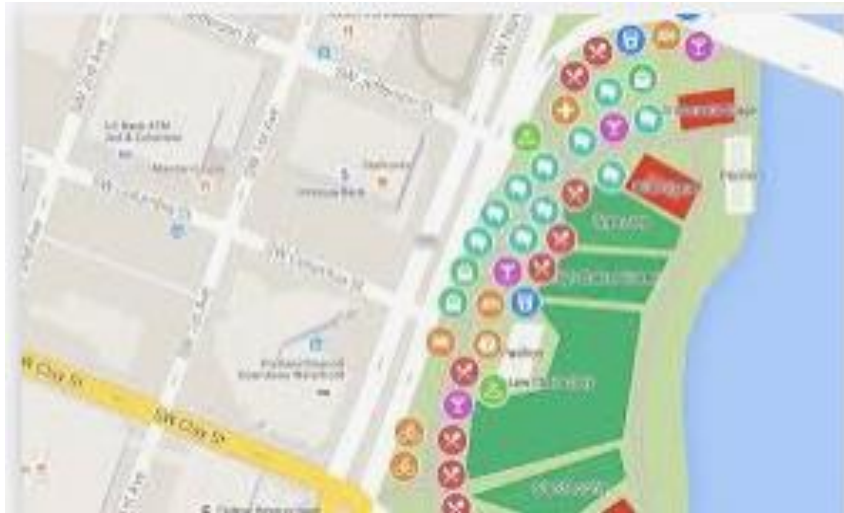


Computing

In Computing, we will be introducing spread sheets and how to use them to show data.

Geography

In Geography, we will be studying a variety of maps and looking at different map symbols. We will also be looking at reading a 4-figure grid reference on a map.



D&T

In D&T, we will be researching information on bug hotels. We will design and investigate proto types of bug hotels and then use this information to create a redesign. We will make bug hotels and lastly evaluate them.

PE

In PE, we will be developing our skills in games and weekly lessons at the swimming pool.



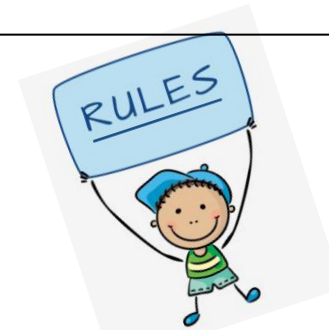
French

In French, we will be introducing vocabulary for some extended family members and learning how to talk about household tasks and family-based weekend activities.



RE

We will be learning about the main features, themes and characters of the Nativity story. Then we will be analysing the old and new symbolism of the Christmas story. We will finish by making a Christingle and studying what they represent.



PSHE

In PSHE, we will be looking at new beginnings rights, rules and responsibilities. This will also link to the work we do for Black History Month when we find out about Martin Luther King.

General Information

Diary Dates

<u>Autumn Term</u>	
Black History Month	October
Inset Day	01.11.2021
Outdoor Learning Day	04.11.2021
Parents Evening	w.c. 08.11.2021 and 15.11.2021
Armistice Day	11.11.2021
Children in Need	12.11.2021
St Andrew's Day	30.11.2021
Christmas Dinner and Jumper Day	10.12.2021

Homework

In Year 4, homework is set weekly. This is on a Friday. It is due in the following Wednesday. Homework can be found on Seesaw.

Homework will consist of:

- *spellings
- *reading comprehension or a Maths activity

Please ask your child to seek help from a member of staff if they are having difficulty with their homework.

PE Days

On a Wednesday or a Friday, with Swimming on Tuesdays